

**NMG NIPRAS**  
METAL GROUP

مجموعة نبراس المعادن  
NIPRAS METAL GROUP



# HANDRAILS AND BALUSTRADES



رؤية  
VISION 2030  
المملكة العربية السعودية  
KINGDOM OF SAUDI ARABIA



✉ info@nipras.sa

🌐 www.nsf-sa.com





# ABOUT US

**NIPRAS METAL GROUP** is a diversified private enterprise and a Saudi organization established in 2010 with a vision to be a preferred partner for our valuable clients in supplying quality and cost effective building construction and Architectural engineering solutions. Since the establishment of NIPRAS, we have been partnered with major organizations in the kingdom to consistently serve their projects and, we have engaged closely with many key contractors and consultants by meeting their expectations in providing high-quality and certified construction and Architectural products. NIPRAS group operates its business units from three divisions in manufacturing, supplying and sub-contracting of various Architectural products such as Roof Hatch Access, Gratings, Railings, Raised Floors, Garbage Chute System, Cable tray management solutions, and all types of stainless steel & metal fabrication and other building construction materials. The company has two production lines of Architectural products and cable management systems.

At NIPRAS we always strive hard to supply and meet our client's requirements with high-quality products quickly and efficiently. The company adopts modern management concept, adheres to survival by quality and development by integrity, and gradually boarded the local competition platform. We rely on service to enhance the client relationship, sincerely create value for customers, and provide customers with high-quality and reliable products and wholehearted service. Our company has advanced production equipment which guarantees the most advantageous product quality and efficiency.

NIPRAS is accredited through various quality certifications and standards meeting all project's technical criteria and consultant approvals. We are an ISO-1519 certified company to ensure the quality, safety, and efficiency of our products. We gain trust of our existing clients and new customers with the best products, the best quality, competitive price and the most perfect service.



## OUR VISION

NIPRAS strives to strengthen its manufacturing base in the steel industry to serve the kingdom and contribute to its vision through effective utilization of staff and materials with cutting-edge technology and high productivity, consistent with modern management practices.

## OUR MISSION

To be a preferred partner for our valuable customers and consistently exceeds our customer's needs and expectations in quality, delivery, and cost through continuous improvement and enhancing customer satisfaction. We go all out to manufacture, deliver and supply superior steel and metal products to our clients utilizing sustainable procedures that meet the international standards.

## OBJECTIVES

- The aim of NIPRAS is to fabricate steel and metal work in the construction sector by the development of standards to turn raw metal into Architectural engineering solutions that can be used in construction.
- To assist clients, kingdom wide, by providing Architectural engineering solutions and expertise.
- To expand our business by offering the best in quality, cost and solutions.
- To provide our employees with the opportunity to develop their full potential within a safe and productive environment.
- To seek a competitive advantage by developing partnerships with clients, suppliers and subcontractors.



## OUR ADDRESS:

### NIPRAS STEEL FACTORY

Prince Mohammed Bin Abdulrahman Road,  
Sulay, Exit 18

P.O. Box 236300, Riyadh, 11332, Saudi Arabia

Email: [info@nipras.sa](mailto:info@nipras.sa) Website: [www.nipras.sa](http://www.nipras.sa)

Tel: +966 11 4151138





## RESEARCH & DEVELOPMENT

VR & D refers to two intertwined processes of research (to identify new knowledge and ideas) and development (turning the ideas into tangible products or processes). Our Research and development (R&D) department includes activities that we undertake to innovate and introduce new products and services.

### NIPRAS R&D'S MISSION IS TO:

- Develop products that create value for customers and expand the use of NIPRAS products worldwide
- Improve NIPRAS competitiveness by developing new industrial processes – and optimising existing ones – to reduce cost and improve quality
- Contribute to sustainable development by reducing the environmental impact of products and processes
- Continuously upgrade NIPRAS scientific knowledge and attract technical talent

### TECHNICAL TEAM



Lead with Engineers and other professionals at NIPRAS TECHNICAL DEPARTMENT, we access a vast array of advanced, highly sophisticated testing, modelling, failure analysis and other resources to develop the next generation of products, where the future is born.

Technical Division is entrusted with the work in respect of various subjects of technical nature via Research & Development, Energy & Environment Management, Standardization & Quality Control of products ETC. The work being dealt with by this division may be grouped under few categories namely,

- Research & Development in Metal & Steel Fabrication
- Technical Regulations on the Products to promote quality
- Technical Inputs on the ongoing / future products ETC.





## SOCIAL RESPONSIBILITY

We "NIPRAS" ability to sense, understand and react to others emotions while comprehending on social networks. (Social awareness which encompasses the competency of empathy is the ability to read non-verbal cues for negative emotions, particularly anger and fear and to judge the trustworthiness of others. It is about understanding others feelings, not experiencing them (Garner, 2009). NIPRAS accentuates on an individual's ability to identify, perceive and react to other's emotions while being a part of the social network circuitry. NIPRAS understand the ability to and be compassionate to the feelings, views, opinions and challenges of other people. Social-awareness cannot only be equated with understanding people's need but as well as caring for them (Coleman, 2006).

## EMPLOYEES

At NIPRAS we empower our employees to leverage the corporate resources at their disposal to do well. Being a socially responsible company can bolster a company's image and build its brand.

## CIVIL SOCIETY

According to the Saudi Youth in Numbers report, 37% of the Saudi population is under 25. This entails that the youth will play a more significant role in undertaking the paths set by Vision 2030 and inheriting the future it's attempting to build. NIPRAS gives our platform to the young for developing their sense of civic responsibility, involvement, and interconnectedness. Opportunities to equip the upcoming generation with the necessary skills and motivation to become active participants in their communities

## CUSTOMERS

A business cannot work without consumer. The survival and growth of business depends on consumer satisfaction, service and support. "NIPRAS" winning the confidence of our customers made it possible by following a positive attitude towards customers and fulfilling our social responsibilities by providing them

- Quality
- Fair Prices
- Honest advertising
- After sales service
- Research & Development for their requirements
- Safety
- Regular supply





# ENVIRONMENT

NIPRAS understands the nature of the relationship between corporate adoption of the concept of societal responsibility [availability of environmental awareness, clear vision of the impact of societal responsibility on financial performance, managers informing employees of the latest developments in societal responsibility programs, managers' response to their corporate social responsibility (CSR) proposals] in the form of an annual report that supports the success of the company's objectives, the company's management encourages employees to participate collectively in societal responsibility programs and to protect the environment from pollution in the industry.



### EMPLOYEES

#### BEING A COMMITTED EMPLOYEER

- Develop talents & encourage leadership and collaborative management.
- Promote diversity & global thinking



### CUSTOMERS

#### BEING AN OUTSTANDING PARTNER FOR OUR CLIENTS

- Provide innovative & sustainable high-quality solutions that meet our customers requirements.
- Build long-term trusting relationships



### CIVIL SOCIETY

#### SERVE CIVIL SOCIETY

- Boost innovative and establish partnership with academic and scientific communities
- Act ethically & responsibility



### ENVIRONMENT

#### BEING AN ENVIRONMENTALLY FRIENDLY PLAYER

- Develop solutions that will help reduce environment footprint of manufacturers and comply with regulatory requirements.
- Limit the environment impact of our global offices





## HEALTH AND SAFETY

"NIPRAS" as a manufacturing Company for Metal & Steel Products has a large number of hazards because of the strong internal as well as external forward and backward linkages in terms of material flows. Employees are to work in hazardous environment because of complicated equipment layouts, high temperatures, heavy equipment's, moving machinery, hazardous processes, heavy lifting and movements of materials in the work environment ETC. Further, several operations involve working at heights or in confined spaces. In short, working involves both very high volume as well as the complexity of operations which results into employees getting exposed to a high level of health and safety risks.

The health, safety, and protection of our employees, equipment, and the environment are perfectly calculated and implied as a crucial since it affects both economic and social factors.. On the other hand, a healthy and safe workplace contributes towards plants competitiveness as well as in profit growth.



Eye protection must be worn



Safety helmets must be worn



Ear Protection must be worn



High visibility clothing must be worn



Face mask must be worn



Safety footwear must be worn



# GLASS & STAINLESS STEEL SYSTEMS

Artistic Stairs offers a full Stainless Steel System including newels, standoffs, or aluminum base shoe styles for glass systems. The Stainless Steel System includes a stainless steel handrail (or can be wood), newel posts, and your choice of stainless balusters or glass panels. The system is generally installed on a wood shoe plate.

Stainless Steel can be installed on both Straight and Curved Stairs. The stairs can be construction grade or finish grade (a more furniture grade quality stair) provided by Artistic Stairs.

These pictures are examples of the Stainless Steel System and 2" round standoffs with 12mm thick glass as guards with Stainless Steel handrail.

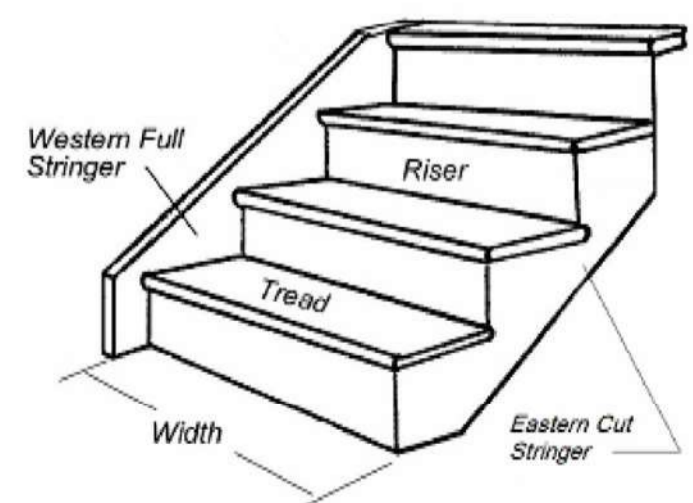
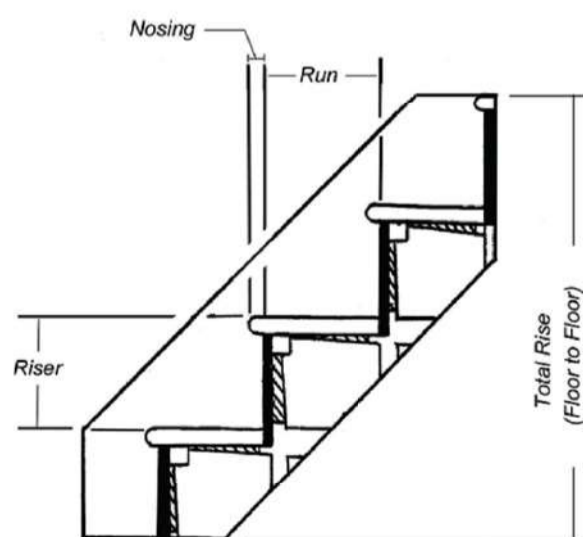
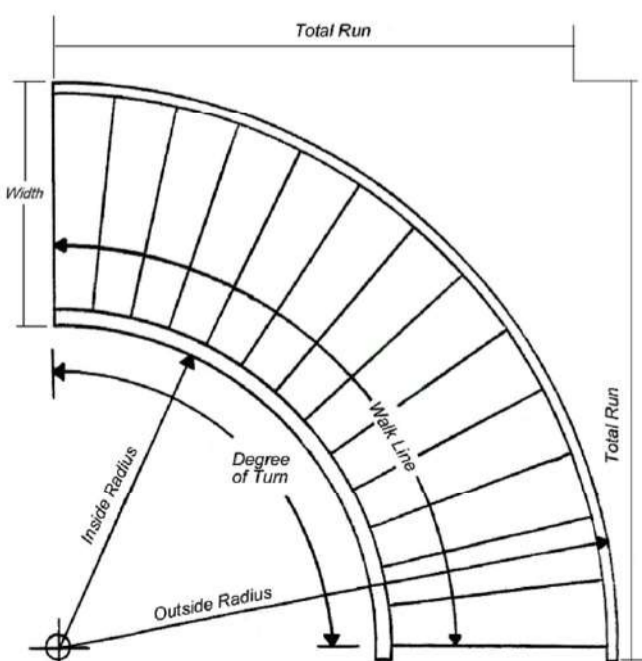




# COMMON TERMINOLOGY

## BASIC STAIR ANATOMY

<b>Degree of Turn</b>	The degree in which a curved stair turns.
<b>Eastern Stringer</b>	Saw Tooth or cutout stringer design in which the spindles sit on the tread of the stair.
<b>Inside Radius</b>	See diagrams below.
<b>Nosing</b>	The portion of the tread that overlaps the riser.
<b>Outside Radius</b>	See diagrams below.
<b>Riser</b>	Vertical dimensions from tread to tread.
<b>Run</b>	Horizontal dimensions from riser to riser.
<b>Stair Width</b>	See diagrams below.
<b>Tread</b>	Horizontal face of the stair.
<b>Walk Line</b>	18" into the tread from the inside of the stair measured from riser to riser. This dimension is used by the inspectors to measure the legal run per tread. Code minimum at this point is 9".
<b>Western Stringer</b>	The tread is fit into the stringer and there is a stringer both below and above the tread.







## PRODUCT DATA SHEET

### GENERAL

The N5F railing system is a rectangular post-mounted glass system where the glass panels are captured and held at the posts. QUAD railing is available in both aluminum and stainless steel.

### OVERALL DIMENSIONS:

- Height of top rail above walking surface: 42 in.
- Post spacing: Determined by site Conditions.
- Mounting Determined by site Conditions.

### MATERIALS:

Posts: Rectangular Aluminum 6005-T5, 2" w x 1" d x .125" Wall Thickness (clear anodized)

Rails: Aluminum 6063-T6, 1 ½" IPS (48.2 mm O.D.) Schedule 40 Wall (clear anodized)  
Aluminum 6063-T6 (clear anodized)

Fasteners: Stainless Steel 304 Alloy Stainless/Aluminum Assist Rail, Top Cap, Powder Coat Finish



## CODE COMPLIANCE:

According to use SBC, IOS ASTM and ISO specific to guardrails, handrails and infill panel materials including glass

## PERFORMANCE REQUIREMENTS

All railings shall be supplied to conform to applicable sections of the following codes:

- International Building Code
- SBC

## STRUCTURAL PERFORMANCE:

Provide railings capable of withstanding the effects of gravity and the following loads and stresses within limits and under conditions indicated:

### Top Rails of Guards:

Uniform load of 50 lb/ft. applied in any direction.

Concentrated load of 200 lb/lf. applied in any direction.

Uniform and concentrated loads need not be assumed to act concurrently.

### Infill Area of Guards:

- Horizontal concentrated load of 50 lbf. applied to 1 sq. ft. at any point in system, including panels, intermediate rails, balusters, or other elements composing infill area. Load on infill area need not be assumed to act concurrently with loads on top rails.
- **For states on IBC 2009/2012:**
- Tempered Glass: ASTM C1048, Fully Tempered, Condition A, Type 1 (Transparent Flat Glass), Quality Q3. Products shall comply with properties indicated for class, thickness, and manufacturing process that have been tested for surface and edge compression according to ASTM C1048 and for impact strength according to 16 CFR 1201 for Category 2 materials.
- Glass infill panel to be 3/8" thickness with maximum spacing between posts to be 4 ft.
- Glass to be monolithic or laminated tempered.
- **For states on IBC 2015, 2018 (Laminated glass is required):**
- Tempered Glass: ASTM C1048, Fully Tempered, Condition A, Type 1 (Transparent Flat Glass), Quality Q3. Products shall comply with properties indicated for class, thickness, and manufacturing process that have been tested for surface and edge compression according to ASTM C1048 and for impact strength according to 16 CFR 1201 for Category 2 materials.
- Glass infill panel to be 3/16" lite, .060" lamination, 3/16" lite for a total thickness of 7/16" with maximum spacing between posts to be 4 ft.
- Glass to be laminated tempered.
- Resin panels to be acrylic 3/8" thickness, from Lumicor® or other architect approved vendor.

### Handrails:

- Uniform load of 50 lb/ft. applied in any direction.
- Concentrated load of 200 lb/lf. applied in any direction.
- Uniform and concentrated loads need not be assumed to act concurrently.





## BUTTON GLASS RAILING

Button Glass Railing offers point or button supported railing that is exceeding transparent

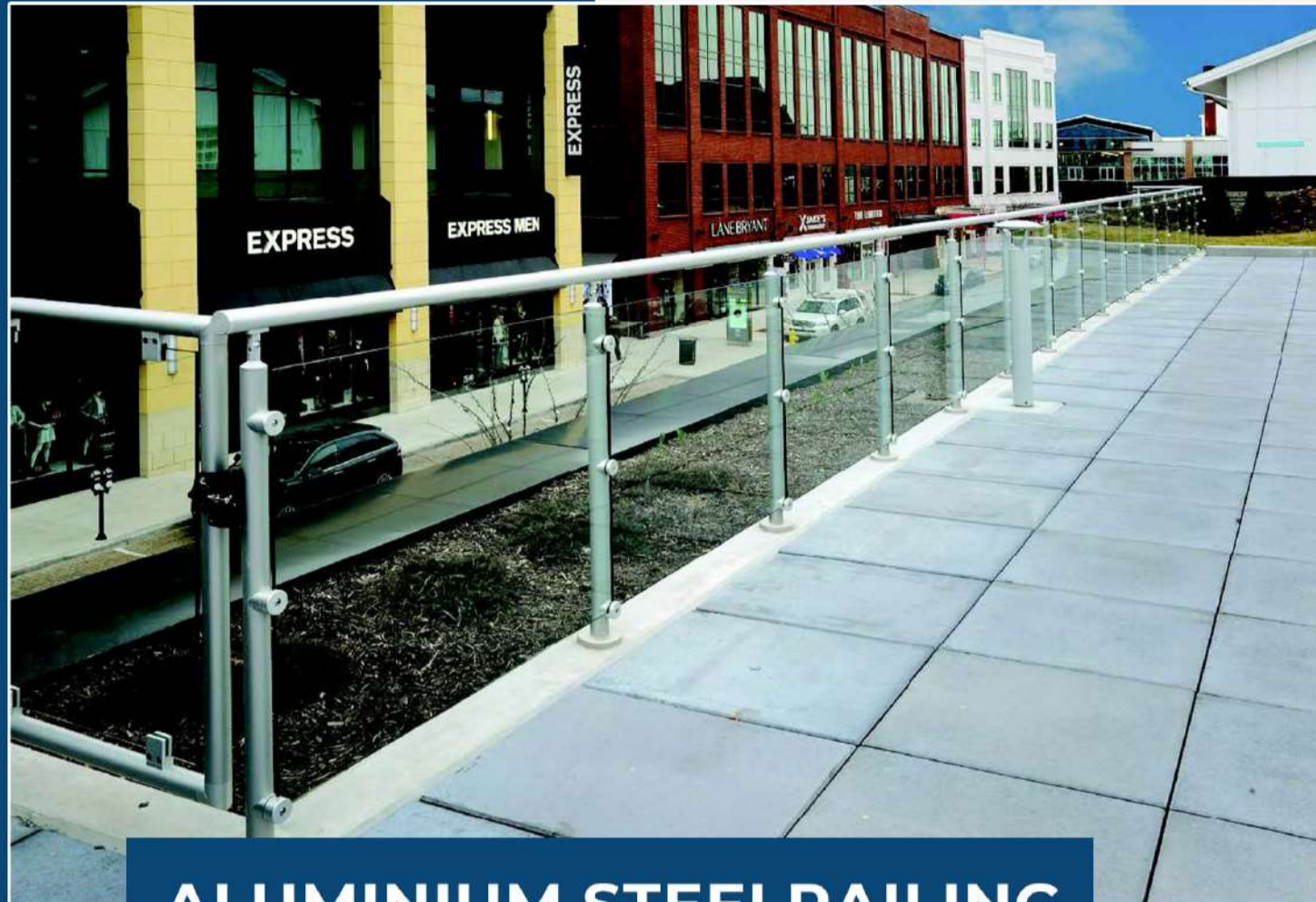
The Glass is considered a guard, therefore, must support loads of 50lb, per linear ft. (distributed load) and 200 lb. point load AT THE TOP OF THE GLASS, glass must be thicker than other types of railing.

Glass that structurally meets building codes is available in either  $\frac{3}{4}$ " monolithic or  $\frac{13}{16}$ " laminated PVB or SGP.

Buttons are available in 304 (standard) and 316 Stainless steel. Assist rail are also available, typically in 304 SS or 316 SS.

Nipras offers fully engineered and tested railing systems that are properly anchored to the mounting surface





## ALUMINIUM STEEL RAILING

### Product Data Sheet

#### GENERAL

The aluminum NSF railing system is designed for glass or resin infill panels, and is used in all railing application that must comply with IBC codes for structural strength and dimensions.

#### OVERALL DIMENSIONS:

Height of top rail above walking surface: 42 in.

Post Spacing: Determined by site conditions.

Mounting: Determined by site conditions.

#### MATERIALS:

**Posts:** Aluminum 6005-T5, 1 ½" IPS (48.2 mm O.D.) Schedule 80 Wall (clear anodized)

**Rails:** Aluminum 6063-T6, 1 ½" IPS (48.2 mm O.D.) Schedule 40 Wall (clear anodized)

**Fittings:** Aluminum 6063-T6 (clear anodized)

**Base Flanges:** Cast Aluminum

**Fasteners:** Stainless Steel 304 Alloy





# STAINLESS STEEL RAILING

## GENERAL

The aluminum NSF railing is designed for glass, resin, or metal infill panels, and is used in all railing application that must comply with IBC codes for structural strength and dimensions.

## OVERALL DIMENSIONS:

Height of top rail above walking surface: 42".

**Post Spacing:** Determined by site conditions.

**Mounting:** Determined by site conditions.

## MATERIALS:

**Posts:** 304 or 316 SS, 1.9"OD, .120" Wall Thickness, #4 Polished Finish Standard

**Rails:** 304 or 316 SS, 1.9" OD, .120" Wall Thickness, #4 Polished Finish Standard

**Fittings:** 304 or 316 Stainless Steel

**Base Flanges:** Internal Flange Steel with 304 or 316 SS Cover Plate

**Fasteners:** Stainless Steel 304 Alloy



# TECHNICAL DATA SHEET FITTINGS AND ACCESSORIES



## Round '2 Inch' Pre-Fabricated Posts AISI 316 (Mirror Finish Only)

- Base pre-welded to optimum standards
- Choose from a 3 hole open flange or base + cover set

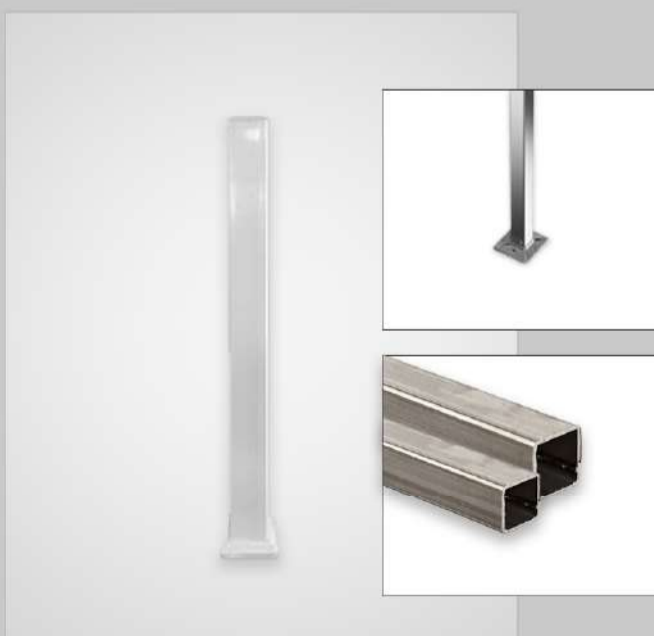
Description	Height
2" Round Post + open flange	1000mm
2" Round Post + base/cover set	1000mm
2" Round Post + open flange	1300mm
2" Round Post + base/cover set	1300mm



## Square '2 Inch' Pre-Fabricated Posts AISI 316 (Satin Finish)

- Base pre-welded to optimum standards

Description	Height
2" Square post + 4 hole flange	1000mm
2" Square post + 4 hole flange	1300mm



## Square '2 Inch' Pre-Fabricated Posts AISI 316 (Mirror Finish)

- Base pre-welded to optimum standards

Description	Height
2" Square post + 4 hole flange	1000mm
2" Square post + 4 hole flange	1300mm



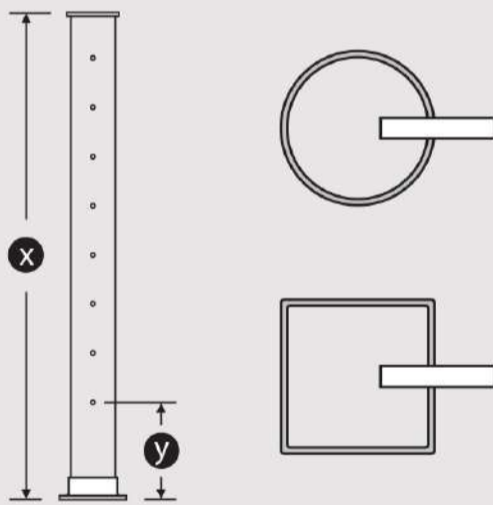


## Made-To-Order Pre-Fabricated Posts

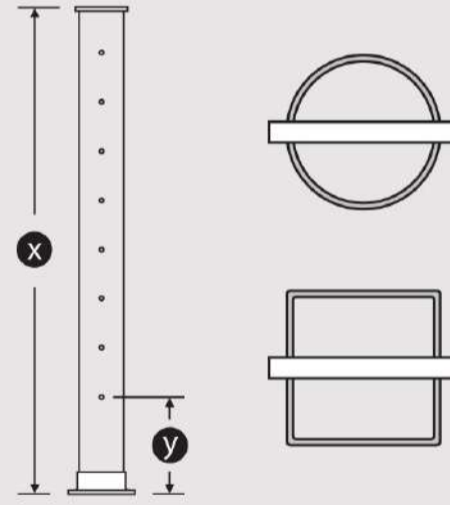
- Base pre-welded to optimum standards
- Choose from a 3 hole open flange or base + cover set



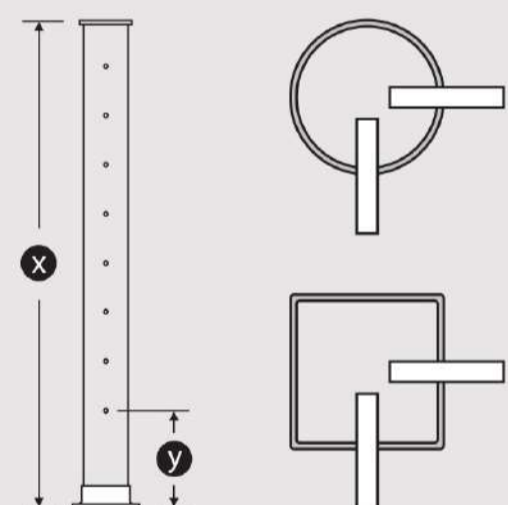
### End Post



### Centre Post



### Corner Post

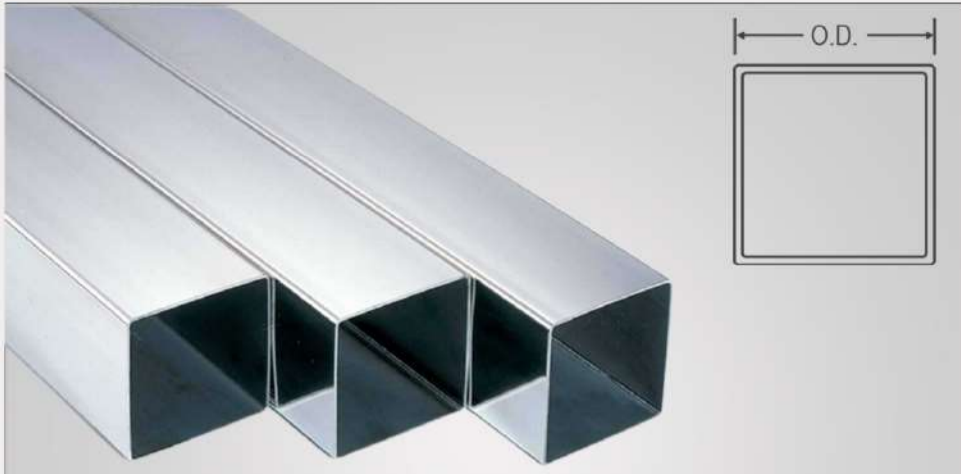


## Ordering Process

To order your custom post simply:

- 1) Select your tube
- 2) Select your base fitting
- 3) Supply specifications for cutting and drilling
- 4) Select your top fitting





Square Stainless Steel  
Welded Tube ASTM A554 (Mirror)

O.D	Wall	Polish	Lgth	Grade	Wgt
2"	1.5mm	600g	6mtr	AISI 316	13kg



Square Stainless Steel  
Welded Tube ASTM A554 (Satin)

O.D	Wall	Polish	Lgth	Grade	Wgt
2"	1.5mm	180g	6mtr	AISI 316	13kg



Round Slotted Stainless Steel  
Welded Tube ASTM A554 AISI 316

O.D	Wall	Polish	Lgth	Grade	Wgt
2"	1.5mm	600g	6mtr	AISI 316	13kg
2"	1.5mm	600g	6mtr	AISI 316	13kg



Round '90°' Slotted Stainless  
Steel Welded Tube ASTM A554  
AISI 316

O.D	Wall	Polish	Lgth	Grade	Wgt
2"	1.5mm	600g	6mtr	AISI 316	13kg
2"	1.5mm	600g	6mtr	AISI 316	13kg



O.D	Wall	Polish	Lgth	Wgt
½"	1.2mm	600g	6mtr	2.0kg
1	1.5mm	600g	6mtr	4.0kg
1 ½"	1.5mm	600g	3mtr	3.5kg
1 ½"	1.5mm	600g	6mtr	7.0kg
2"	1.5mm	600g	3mtr	11kg
2"	1.5mm	600g	6mtr	5.5kg
2 ½"	1.5mm	600g	6mtr	14kg





**End Cap 'Self Grip' AISI 316**

- A popular cast, intermediate dome cap with knurled grip for fit into tube

Tube Ø	Wall	B	H	Wgt
½"	1.5mm	38.1	2.5	65g
2"	1.5mm	50.8	2.5	125g

**End Cap 'Dome' AISI 316**

- A popular cast dome cap, used for handrail ends or freestanding post tops

Tube Ø	Wall	B	H	Wgt
½"	1.5mm	25.4	13	30g
1 ½"	1.5mm	38.1	19	78g
2"	1.5mm	50.8	25	160g



**Showcase**  
Handrail + dome end cap  
+ adjustable rail support

**End Cap 'Light Knock-In' AISI 316**

- Attractive self holding, slightly domed end cap
- A soft faced hammer is used to tap these in place
- Suitable for handrail ends or freestanding post tops

Tube Ø	Wall	B	H	Wgt
½"	1.5mm	25.4	4.0	7g
1 ½"	1.5mm	38.1	6.0	15g
2"	1.5mm	50.8	8.0	26g

**End Cap 'Flat' AISI 316**

- A popular cast true flat end cap, used for handrail ends or freestanding post tops

Tube Ø	Wall	B	H	Wgt
½"	1.5mm	25.4	4.0	7g
1 ½"	1.5mm	38.1	6.0	15g
2"	1.5mm	50.8	8.0	26g





### Handrail End '45°' AISI 316

- A 45° cast handrail end mainly used for stairway handrail terminations

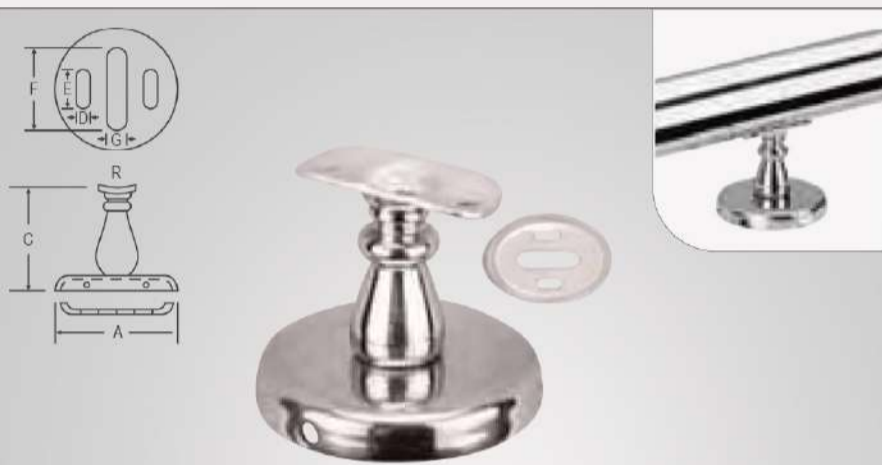
Tube Ø	Wall	A	B	C	Wgt
2"	1.5mm	70	50.8	83	400g



### Handrail End '90°' AISI 316

- A 90° cast handrail end mainly used for stairway handrail terminations

Tube Ø	Wall	A	B	C	Wgt
2"	1.5mm	89	50.8	70	380



### Handrail Support 'Radiused' AISI 304

- Concealed base handrail support with radiused top
- Designed to be mounted on top of nub wall, vertical wall or floor
- Cover tightens onto base via the allen key screw on the side

Tube Ø	A	C	D	E	F	G	R	Wgt
1 ½"	76	57	6	12	31	9	1 ½"	260g
2"	76	57	6	12	31	9	2"	260g



### Parapet Rail Support 'Centre Support' AISI 304

- Concealed base handrail centre support
- Designed to be mounted on top of a nub wall, vertical wall or floor
- Cover tightens onto base via the allen key screw on the side

Tube Ø	A	B	C	D	E	F	G	Wgt
1 ½"	100	38.1	78	6	12	31	9	285g
2"	100	50.8	78	6	12	31	9	296g



### Handrail Support 'Radiused' AISI 304

- Concealed base handrail end support
- Designed to be mounted on top of a nub wall, vertical wall or floor
  - Cover tightens onto base via the allen key screw on the side

Tube Ø	A	B	C	D	E	F	G	Wgt
1 ½"	100	38.1	78	6	12	31	9	294g
2"	100	50.8	78	6	12	31	9	325g

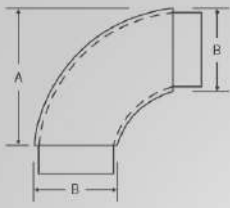


### Parapet Rail Support 'Corner Support' AISI 304

- Concealed base handrail corner support
- Designed to be mounted on top of a nub wall or floor to achieve a 90° corner
  - Cover tightens onto base via the allen key screw on the side

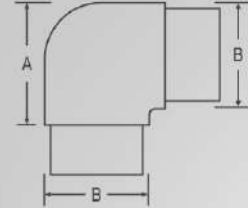
Tube Ø	A	B	C	D	E	F	G	Wgt
1 ½"	100	38.1	78	6	12	31	9	300g
2"	100	50.8	78	6	12	31	9	335g





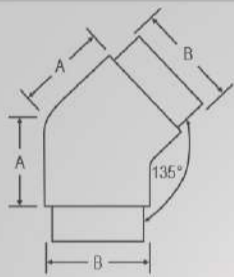
**Flush Joiner 90° Radiused  
AISI 316**

Tube Ø	Wall	A	B	Wgt
1 ½"	1.5mm	66	38.1	271g
2"	1.5mm	66	50.8	395g



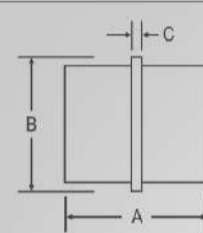
**Flush Joiner 90° AISI 316**

Tube Ø	Wall	A	B	Wgt
1"	1.5mm	38	25.4	102g
1 ½"	1.5mm	51	38.4	235g
2	1.5mm	57	50.8	415g



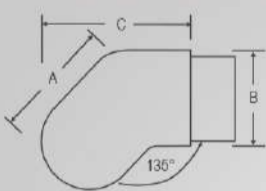
**Flush Joiner 135° AISI 316**

Code	Tube Ø	Wall	A	B	Wgt
1003E	1"	1.5mm	22	25.4	82g
1503E	1 ½"	1.5mm	41	38.4	274g
2003E	2	1.5mm	43	50.8	418g



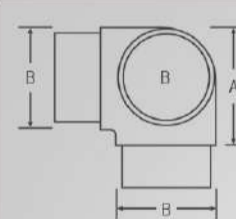
**Flush Joiner 'In-Line' AISI 316**

Tube Ø	Wall	A	B	Wgt
1"	1.5mm	38	25.4	45g
1 ½"	1.5mm	51	38.1	112g
2	1.5mm	54	50.8	120g



**Flush Joiner 'Tee' AISI 316**

Tube Ø	Wall	A	B	C	Wgt
1"	1.5mm	36	25.4	45	123g
1 ½"	1.5mm	51	38.1	60	282g
2"	1.5mm	57	50.8	60	465g



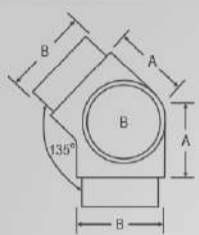
**Flush Joiner '90° Tee' AISI 316**

Tube Ø	Wall	A	B	Wgt
1"	1.5mm	32	25.4	125g
1 ½"	1.5mm	51	38.1	294g
2	1.5mm	55	50.8	450g



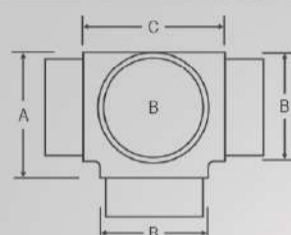
# Showcase

## Flush tee joiners + round tubing + base plates



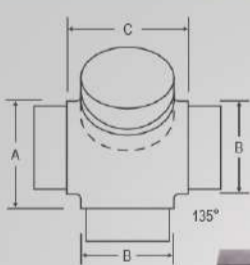
Flush Joiner '135° Tee' AISI 316

Tube Ø	Wall	A	B	Wgt
1 1/2"	1.5mm	38	38.1	241g
2"	1.5mm	48	50.8	500g



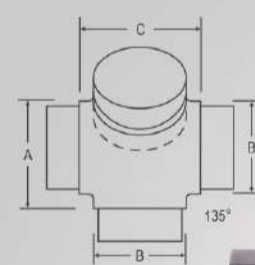
Flush Joiner '4-Way Tee' AISI 316

Tube Ø	Wall	A	B	C	Wgt
1 1/2"	1.5mm	51	38.1	60	271g
2"	1.5mm	57	50.8	67	395g



Flush Joiner 135° 'Star' AISI 316

Tube Ø	Wall	A	B	C	Wgt
1 1/2"	1.5mm	51	38.1	60	318g
2"	1.5mm	57	50.8	67	537g



Flush Joiner 4-Way 'Star' AISI 316

Tube Ø	Wall	A	B	C	Wgt
1 1/2"	1.5mm	60	38.1	60	419g
2"	1.5mm	67	50.8	67	490g



### Round Cover Plate Only AISI 31

- Self holding cover plate
- Suitable for posts/handrails which are set into a surface or over a fixed base plate

Tube Ø	A	H	Wgt
1 ½"	92	20	37
2"	110	20	49

### Round Base Plate With Cover (Weld) AISI 316

- A sheet material round base plate with self holding cover
- This item is suited for intermediate handrail posts and requires welding

Tube Ø	A	B	H	T	Grade	Wgt
1 ½"	72	2.0	20	10.5	AISI 304	72g
1	92	2.0	20	10.5	AISI 304	125g
2"	110	2.0	20	10.5	AISI 316	173g
2 ½"	120	2.5	25	10.5	AISI 304	258g
3	135	3.0	31	10.5	AISI 304	362g

### Round Cover Plate Only AISI 31

- 3-hole base plate for commercial and structural applications
- Satin surface finish
- Clip on cover also available
- This item must be welded

Tube Ø	A	B	T	I	Wgt
1 ½"	100	6.0	12.5	51	249

### Round Base Plate Only (Weld) AISI 304

- 3-hole base plate in mill surface finish
- This item must be welded

Tube Ø	A	B	I	T	Wgt
1 ½"	65	2.0	13.0	6.5	48g
1	65	2.0	25.5	6.5	41g
1 ½"	80	2.0	38.3	6.5	59g
2"	100	3.0	51.1	8.5	133g

### Round Base Plate Only (Weld) AISI 316

- 3-hole base plate with clip on cover
- This item must be welded
- Mirror polished cover plate

Tube Ø	A	B	I	T	Wgt
1 ½"	65	2.0	13.0	6.5	81g
1	65	2.0	25.5	6.5	72g
1 ½"	80	2.0	38.3	6.5	100g
2"	100	3.0	50.1	8.5	217g

### Round Base Plate With Cover (Weld) AISI 316

- A sheet material round base plate with self holding cover
- This item is suited for intermediate handrail posts and requires welding

Tube Ø	A	B	H	T	Finish	Wgt
1 ½"	67	0.80	15	13.1	Mirror	72g
1	67	0.80	15	25.8	Mirror	125g
2"	82	0.80	17	38.4	Mirror	173g
2 ½"	102	0.80	26	51.2	Mirror	258g
3	102	0.80	26	51.2	Satin	362g



# Showcase

## Handrail + perpendicular joiners + wire balstrading



**Square Base Plate  
'Heavy Duty' (Weld) AISI 304**

- Square, heavy duty 4-hole sheet type material base plate
- Suitable for commercial or domestic use where the need for strength is an issue
- This item requires welding to the underneath side of the plate

Tube Ø	A	B	C	D	I	Wgt
1 ½"	38.4	110	3.0	17	10.5	266g
1"	51.0	110	4.0	19	10.5	330g
1 ½"	64.2	127	4.0	24	10.5	449g
2"	77.0	143	5.0	26	10.5	630g



**Oblong Base  
Plate/Flange AISI 316**

- Heavy duty cast 2-hole slab base
- Suitable for fixing handrails in between timber, masonry or steel posts
- May also be used for floor mounting where space is limited

Tube Ø	A	B	C	H	I	Wgt
1	65	25.4	45	25	5.0	94g
1 ½"	75	38.1	56	25	5.0	140g
2"	100	50.8	70	31	7.0	246g



**Round Base  
Plate/Flange AISI 316**

- Popular heavy duty cast three hole base plate
- Suitable for fixing posts to flooring or handrails to walls or posts

Tube Ø	A	B	H	I	Wgt
1	70	25.4	25	5.0	105g
1 ½"	76	38.1	25	5.0	140g
2"	102	50.8	31	6.5	235g

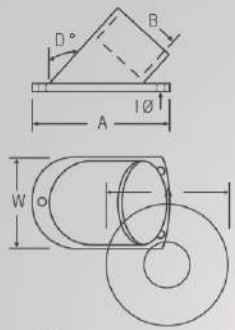


**Round Adjustable 'Heavy Duty'  
Base Plate With Cover AISI 316**

- Height adjustable concealed heavy duty base plate
- Self-holding fins that grip onto the outside of the tube
- No welding required

Tube Ø	A	B	C	Wgt
1	35	25.4	67	145g
1 ½"	76	38.1	81	310g
2"	102	50.8	104	405g

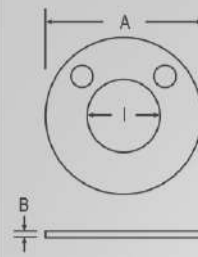




### Square Base Plate 'Heavy Duty' (Weld) AISI 304

- Suitable for fixing handrails down stairways between timber, masonry or steel posts
- 3-hole cast angled flange (please specify stairway angle when ordering)
- Flange can be turned 180° to complete the stairway handrail

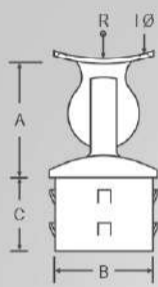
Tube Ø	D	A	B	W	I	Wgt
1 1/2"	32°	97	38.1	64	6.5	205g
2"	45°	130	50.8	70	7.0	306g
2"	37°	110	50.8	70	6.0	260g



### Corner Flange AISI 316

- Suited to top rail corner sections
- Ideal for corner sections on decks, pool fences or feature walls

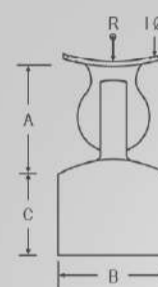
Suit Post	A	B	C	D	E	Wgt
2"	50.8	31	85	6.0	100	338g



### Adjustable Rail Support Radiused 'Internal Fit' AISI 316

- Fully adj. handrail support for fixing stairway posts to angled round handrails
- External spring leaves grip tube internal for extreme hold and easy installation

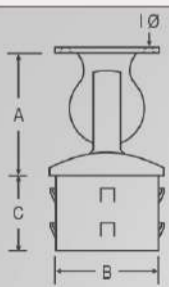
Tube Ø	Wall	A	B	C	I	R	Wgt
1"	1.5mm	32	25.4	19	4	1"	63g
1"	1.5mm	32	25.4	19	4	1 1/2"	66g
1"	1.5mm	32	25.4	19	4	2"	160g
1 1/2"	1.5mm	45	38.1	29	5	1 1/2"	164g
1 1/2"	1.5mm	45	38.1	29	5	2"	164g
2"	1.5mm	51	50.8	32	5	2"	315g



### Adjustable Rail Support Radiused 'External Fit' AISI 316

- Fully adj. handrail support for fixing stairway posts to angled round handrails
- Internal ribs negate the need for welding or a true end cut of the tube

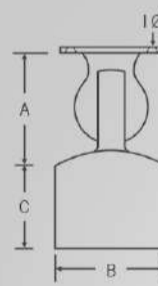
Tube Ø	Wall	A	B	C	I	R	Wgt
1"	1.5mm	32	25.4	19	4	1"	67g
1"	1.5mm	32	25.4	19	4	2"	72g
2"	1.5mm	51	50.8	32	5	2"	316g



### Adjustable Rail Support Flat 'Internal Fit' AISI 316

- Fully adj. handrail support for fixing stairway posts to angled round handrails
- External spring leaves grip tube internal for extreme hold and easy installation

Tube Ø	Wall	A	B	C	I	Wgt
1"	1.5mm	32	25.4	19	4	69g
1 1/2"	1.5mm	45	38.1	29	5	152g
2"	1.5mm	51	50.8	32	5	308g

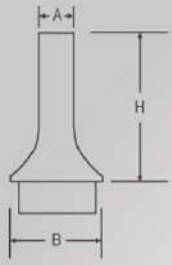


### Adjustable Rail Support Flat 'External Fit' AISI 316

- Fully adj. handrail support for fixing stairway posts to angled round handrails
- Internal ribs negate the need for welding or a true end cut of the tube

Tube Ø	Wall	A	B	T	I	Wgt
2"	1.5mm	51	50.8	32	5	309g

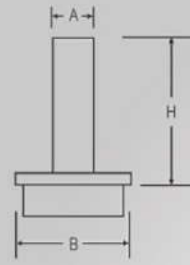




### Post Reducer 'Tapered' AISI 316

- Flush fitting slimline post top reducer for a decorative look
- Use with 313AL-1 (page 19) or 1027A (page 19) to join to horizontal handrail or 314AL-1 (page 19) to a stairway handrail
- If using a timber top rail use a 1014A (see page 21)

Code	Tube Ø	Wall	A	B	H	Wgt
1520A	1 ½"	1.5mm	¾"	38.1	84	110
2020A	2"	1.5mm	1"	50.8	84	143



### Post Reducer 'Flat' AISI 316

- Flush fitting slimline post top reducer for a decorative look
- Use with 313AL-1 (page 19) or 1027A (page 19) to join to horizontal handrail or 314AL-1 (page 19) to a stairway handrail
- If using a timber top rail use a 1014A (see page 21)

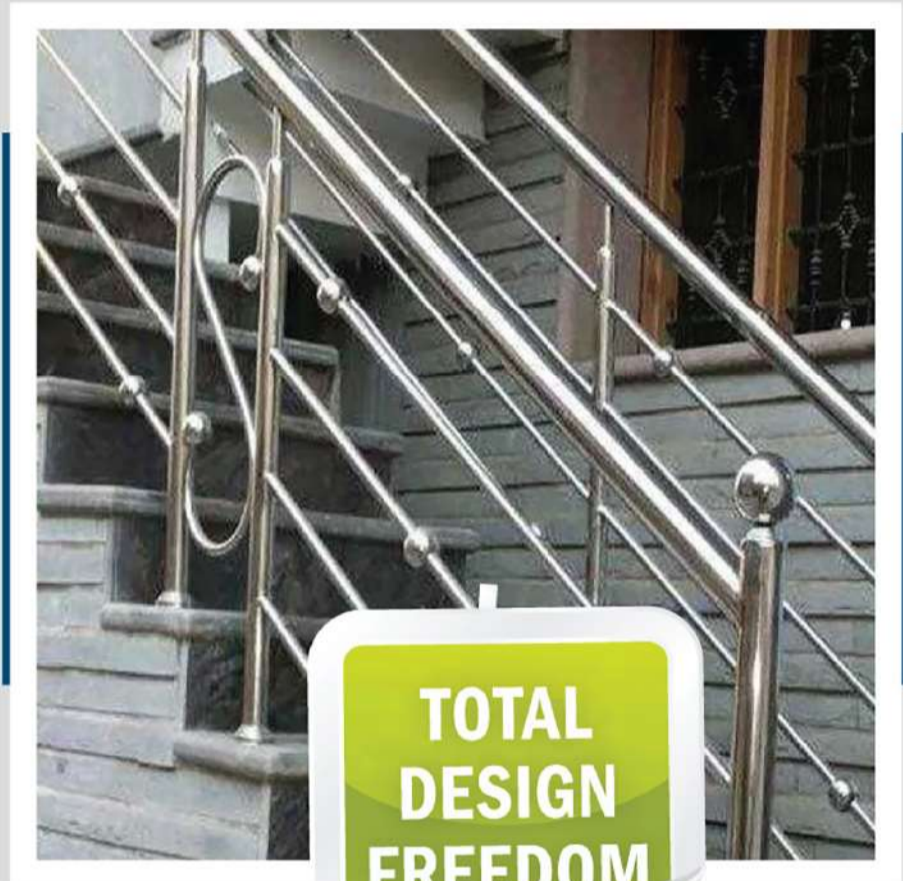
Code	Tube Ø	Wall	A	B	H	Wgt
1522A	1 ½"	1.5mm	¾"	38.1	91	84g
2022A	2"	1.5mm	1"	50.8	91	186



### Post Reducer 'Dome' AISI 316

- Flush fitting dome post top reducer for a decorative look
- Use with 313AL-1 (page 19) or 1027A (page 19) to join to horizontal handrail or 314AL-1 (page 19) to a stairway handrail
- If using a timber top rail use a 1014A (see page 21)

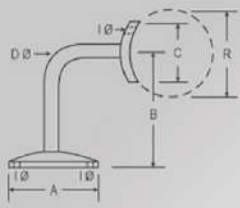
Code	Tube Ø	Wall	A	B	H	Wgt
1522A	1 ½"	1.5mm	¾"	38.1	85	105g
2022A	2"	1.5mm	1"	50.8	85	177g



**TOTAL  
DESIGN  
FREEDOM**



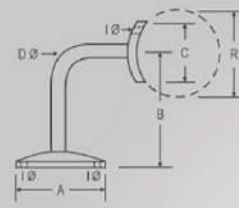




### Post Reducer 'Tapered' AISI 316

- 3-hole handrail support designed for fixing to any type of wall
- Radiused top with countersunk holes allows a handrail to be attached without the need for welding

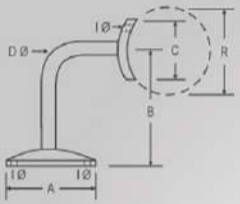
Code	A	B	C	D	I	R	Wgt
1528A	63	85	31	12	5.5	1 1/2"	247g
2028A	63	85	31	12	5.5	2"	247g



### Post Reducer 'Tapered' AISI 316

- 3-hole handrail support designed for fixing to any type of wall
- Radiused top with countersunk holes allows a handrail to be attached without the need for welding

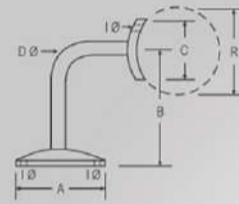
Code	A	B	C	D	I	L	R	Wgt
1528A-S	63	85	31	12	5.5	54	1 1/2"	270g
2028A-S	63	85	31	12	5.5	54	2"	270g



### Handrail Support 'Flat Top' AISI 316

- 3-hole handrail support designed for fixing to any type of wall
- Flat top with countersunk holes allows a handrail to be attached without the need for welding

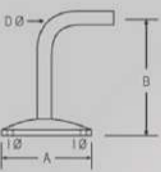
Code	A	B	C	D	I	Wgt
2029A	63	85	31	12	5.5	232g



### Handrail Support With Coach Screw 'Flat Top' AISI 316

- Coach screw fix handrail support designed for fixing into timber stud wall
- The flat top with countersunk holes allows a handrail to be attached without the need for welding

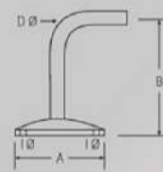
Code	A	B	C	D	I	L	Wgt
2029A-S	63	85	31	12	5.5	57	262g



### Handrail Support Without Top AISI 316

- 3-hole handrail support designed for fixing to any type of wall
- Unradiused fitting allows any handrail to be welded or fastened to the bracket

Code	A	B	D	I	Wgt
2028A-B	63	85	12	5.5	235g



### Handrail Support Without Top AISI 316

- Coach screw fix handrail support designed for fixing into timber stud wall
- Unradiused fitting allows any handrail to be welded or fastened to the bracket

Code	A	B	D	L	Wgt
2028A-S-B	63	85	12	57	230g

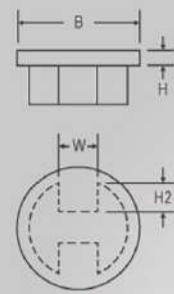




## Round Slotted Tube Blanking Strip AISI 316

• Cut to size and fill in any gaps to complete handrails

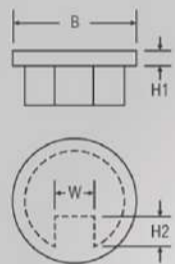
Code	Tube	Suit Slot	Wall	Polish	Length	W	Wgt
RSST-STRIP	2"	15mm	1.5mm	600g	2mtr	15	1.5kg



## End Cap 'Flat' AISI 316

• Use for handrail ends or freestanding post tops

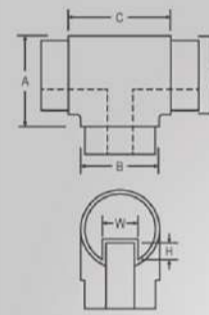
Code	Tube	Wall	B	H1	H2	W	Wgt
RDST-2019	2" dbl slot	1.5mm	50.8	3.0	15	18	127g



## End Cap 'Flat' AISI 316

• Use for handrail ends or freestanding post tops

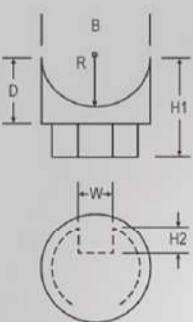
Code	Tube	Wall	B	H1	H2	W	Wgt
RSST-2019	2" single slot	1.5mm	50.8	3.0	15	18	103g



## Flush Joiner 'Tee' AISI 316

• Bottom section suits double slotted tube  
• Top section suits single slotted tube

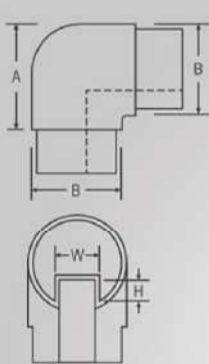
Code	Tube	Wall	A	B	C	H	W	Wgt
RDST-2005	2" dbl/single slot	1.5mm	67	50.8	74	15	18	742g



## Perpendicular Joiner 'Flush Fitting' AISI 316

• Join posts to a horizontal h/rail or join horizontal h/rail to vertical posts  
• Fix joiners to top h/rail with screws or rivets through the underneath internal

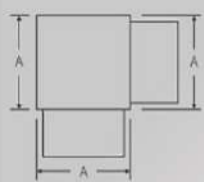
Code	Tube	Wall	B	D	H1	H2	R	W	Wgt
RDST-2027	2" dbl slot	1.5mm	50.8	30	53	15	2"	18	208g



## Flush Joiner '90°' AISI 316

Code	Tube	Wall	A	B	H	W	Wgt
RSST-2002	2" single slot	1.5mm	63	50.8	15	18	512g

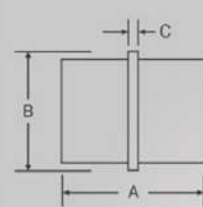




### Square Flush Joiner '90°' AISI 316 (Satin)

- Satin (180g) finished modular handrail components
- Heavy duty cast components suitable also on commercial sites
- Epoxy glue, pop rivet or weld together fittings

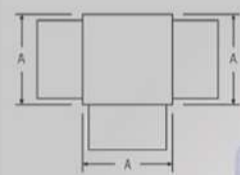
Code	Suit Tube	Wall	A	B	Wgt
ST-2002	2" square	1.5mm	50.8	50.8	455g



### Square Flush Joiner 'In-Line' AISI 316 (Satin)

- Satin (180g) finished modular handrail components
- Heavy duty cast components suitable also on commercial sites
- Epoxy glue, pop rivet or weld together fittings

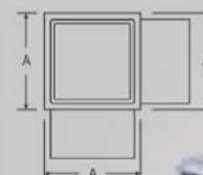
Code	Suit Tube	Wall	A	B	C	Wgt
ST-2004	2" square	1.5mm	66	50.8	6.0	254g



### Square Flush Joiner 'Tee' AISI 316 (Satin)

- Satin (180g) finished modular handrail components
- Heavy duty cast components suitable also on commercial sites
- Epoxy glue, poprivet or weld together fittings

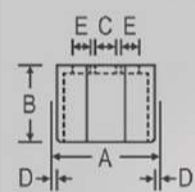
Code	Suit Tube	Wall	A	B	C	Wgt
ST-2005	2" square	1.5mm	50.8	50.8	50.8	533g



### Square Flush Joiner '90° Tee' AISI 316 (Satin)

- Satin (180g) finished modular handrail components
- Heavy duty cast components suitable also on commercial sites
- Epoxy glue, poprivet or weld together fittings

Code	Suit Tube	Wall	A	B	Wgt
ST-2006	2" square	1.5mm	50.8	50.8	552g



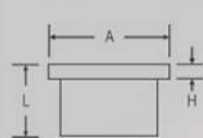
USE WITH SATIN OR MIRROR FINISH SQUARE TUBE



### Square Perpendicular Joiner 'Flush Fitting' AISI 316

- Join posts to a horizontal handrail or horizontal handrails to vertical posts
- Fix with screws or rivets through the underneath internal
- Can be used in conjunction with either satin or mirror finish square tube

Code	Suit Tube	Wall
ST-2027	2" square	1.5mm

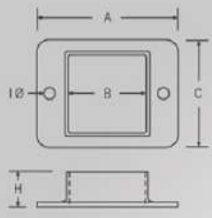


### Square End Cap 'Flat' AISI 316 (Satin)

- Satin (180g) finished modular handrail components
- Heavy duty cast components suitable also on commercial sites
- Epoxy glue, pop rivet or weld together fittings

Code	Suit Tube	Wall	A	H	L	Wgt
ST-2019	2" square	1.5mm	50.8	4.0	35	174g

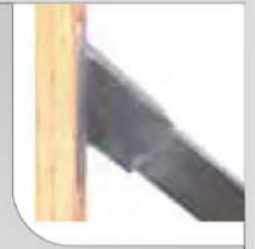
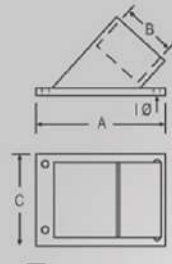




### Square –Oblong Base Plate/Flange AISI 316 (Satin)

- Satin (180g) finished modular handrail components
- Heavy duty cast components suitable also on commercial sites
- Epoxy glue, pop rivet or weld together fittings

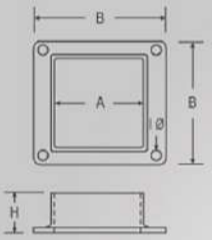
Code	Suit Tube	Wall	A	B	C	H	I	Wgt
ST-2014	2" square	1.5mm	100	50.8	75	38	6.0	355g



### Square Base Plate/Flange AISI 316 (Satin)

- Satin (180g) finished modular handrail components
- Heavy duty cast components suitable also on commercial sites
- Epoxy glue, pop rivet or weld together fittings

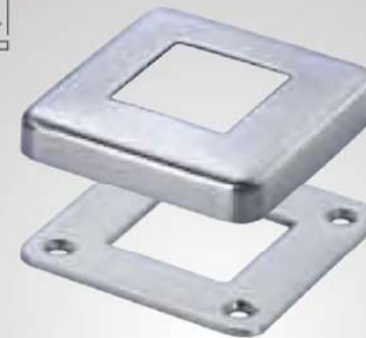
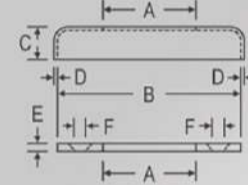
Code	Suit Tube	Wall	A	B	C	I	Wgt
ST-2015	2" square	1.5mm	155	50.8	80	8.0	690g



### Square Base Plate/Flange AISI 316 (Satin)

- Satin (180g) finished modular handrail components
- Heavy duty cast components suitable also on commercial sites
- Epoxy glue, pop rivet or weld together fittings

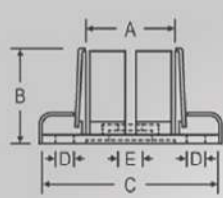
Code	Suit Tube	Wall	A	B	H	I	Wgt
ST-2016	2" square	1.5mm	50.8	100	38	6.0	400g



### Square Base Plate With Cover (Weld) AISI 316 (Satin)

- 4-hole base and cover set
- Satin (180g) finished modular handrail components
- This item must be welded

Code	Suit Tube	Wall	A	B	C	D	E	F	Wgt
ST-2001A	2" square	1.5mm	50.8	84	14	1.0	3.0	6.0	148g



### Square Base Plate With Cover (Weld) AISI 316 (Satin)

- 4-hole base and cover set
- Satin (180g) finished modular handrail components
- This item must be welded

Code	Suit Tube	A	B	C	D	E	Wgt
ST-2099	2" square	50.8	60	101	8.0	10.0	732g





### Square Adjustable Rail Support 'Flat Top' AISI 316 (Satin)

- Satin (180g) finished modular handrail components
- Heavy duty cast components suitable also on commercial sites
- Epoxy glue, poprivet or weld together fittings

Code	Suit Tube	Wall	A	B	H	I	Wgt
ST-315AP	2" square	1.5mm	66	50.8	50	6.0	375g



### Square - Round Post Reducer 'In-Line' AISI 316 (Satin)

- Reducer to allow square intermediate posts with round handrail
- Satin (180g) finished modular handrail components
- Heavy duty cast components suitable also on commercial sites
- Epoxy glue, poprivet or weld together fittings

Code	Suit Tube	Wall	A	H	L	R	W	Wgt
ST-2020	2" square	1.5mm	50.8	70	35	2"	12	278g

## SHOWCASE

Square handrail + end cap  
adjustable rail support +  
square base plate/flange

H/RAIL SYSTEMS SQUARE



### Square - Round Post Reducer 'Adjustable' AISI 316 (Satin)

- Reducer to allow square posts to angled round handrail
- Satin (180g) finished modular handrail components
- Heavy duty cast components suitable also on commercial sites
- Epoxy glue, pop rivet or weld together fittings

Code	Suit Tube	Wall	A	H	L	R	W	Wgt
ST-2020	2" square	1.5mm	50.8	70	35	2"	12	278g

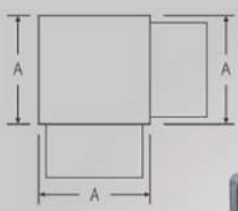


### Square - Round Post Reducer 'Adjustable' AISI 316 (Satin)

- Reducer to allow square posts to angled round handrail
- Satin (180g) finished modular handrail components
- Heavy duty cast components suitable also on commercial sites
- Epoxy glue, pop rivet or weld together fittings

Code	Suit Tube	Wall	A	H	L	R	W	Wgt
ST-2020	2" square	1.5mm	50.8	70	35	2"	12	278g

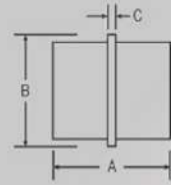




### Square Flush Joiner '90°' AISI 316 (Mirror)

- Mirror finished modular handrail components
- Heavy duty cast components suitable also on commercial sites
- Epoxy glue, pop rivet or weld together fittings

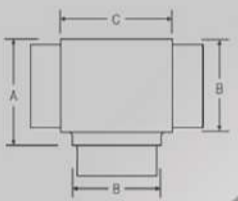
Code	Suit Tube	Wall	A	B	Wgt
MST-2002	2" square	1.5mm	50.8	50.8	455g



### Square Flush Joiner 'In-Line' AISI 316 (Mirror)

- Mirror finished modular handrail components
- Heavy duty cast components suitable also on commercial sites
- Epoxy glue, pop rivet or weld together fittings

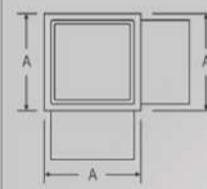
Code	Suit Tube	Wall	A	B	C	Wgt
MST-2004	2" square	1.5mm	66	50.8	6.0	254g



### Square Flush Joiner 'Tee' AISI 316 (Mirror)

- Mirror finished modular handrail components
- Heavy duty cast components suitable also on commercial sites
- Epoxy glue, pop rivet or weld together fittings

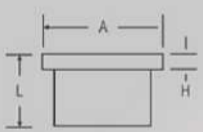
Code	Suit Tube	Wall	A	B	C	Wgt
MST-2005	2" square	1.5mm	50.8	50.8	50.8	533g



### Square Flush Joiner '90° Tee' AISI 316 (Mirror)

- Mirror finished modular handrail components
- Heavy duty cast components suitable also on commercial sites
- Epoxy glue, pop rivet or weld together fittings

Code	Suit Tube	Wall	A	B	Wgt
MST-2006	2" square	1.5mm	50.8	50.8	552g



### Square End Cap 'Flat' AISI 316 (Mirror)

- Mirror finished modular handrail components
- Heavy duty cast components suitable also on commercial sites
- Epoxy glue, pop rivet or weld together fittings

Code	Suit Tube	Wall	A	H	L	Wgt
MST-2019	2" square	1.5mm	50.8	4.0	35	174g







### Square – Oblong Base Plate/Flange AISI 316 (Mirror)

- Mirror finished modular handrail components
- Heavy duty cast components suitable also on commercial sites
- Epoxy glue, pop rivet or weld together fittings

Code	Suit Tube	Wall	A	B	C	H	I	Wgt
MST-2014	2" square	1.5mm	100	50.8	75	38	6.0	355g



### Square Wall Stop Flange '37°' AISI 316 (Mirror)

- Mirror finished modular handrail components
- Heavy duty cast components suitable also on commercial sites
- Epoxy glue, pop rivet or weld together fittings

Code	Suit Tube	Wall	A	B	C	I	Wgt
MST-2015	2" square	1.5mm	155	51.5	80	8.0	690g



### Square Base Plate/Flange AISI 316 (Mirror)

- Mirror finished modular handrail components
- Heavy duty cast components suitable also on commercial sites
- Epoxy glue, pop rivet or weld together fittings

Code	Suit Tube	Wall	A	B	H	I	Wgt
MST-2016	2" square	1.5mm	50.8	100	38	6.0	400g



### Square – Round Post Reducer '90° Corner' AISI 316 (Mirror)

- Reducer to allow square 90° corner posts to round handrail
- Mirror finished modular handrail components
- Heavy duty cast components suitable also on commercial sites
- Epoxy glue, pop rivet or weld together fittings

Code	Suit Tube	Wall	A	H	L	R	W	Wgt
MST-2020	2" square	1.5mm	50.8	70	35	2"	12	278g



### Square End Cap 'Flat' AISI 316 (Mirror)

- Reducer to allow square posts to angled round handrail
- Mirror finished modular handrail components
- Heavy duty cast components suitable also on commercial sites
- Epoxy glue, pop rivet or weld together fittings

Code	Suit Tube	Wall	A	H	L	R	W	Wgt
MST-2021	2" square	1.5mm	50.8	70	35	2"	16	265g



### Square – Round Post Reducer '90° Corner' AISI 316 (Mirror)

- Reducer to allow square 90° corner posts to round handrail
- Mirror finished modular handrail components
- Heavy duty cast components suitable also on commercial sites
- Epoxy glue, pop rivet or weld together fittings

Code	Suit Tube	Wall	A	H	L	R	W	Wgt
MST-2022	2" square	1.5mm	50.8	70	35	2"	12	284g





### Square Adjustable Rail Support 'Flat Top' AISI 316 (Mirror)

- Mirror finished modular handrail components
- Heavy duty cast components suitable also on commercial sites
- Epoxy glue, pop rivet or weld together fittings

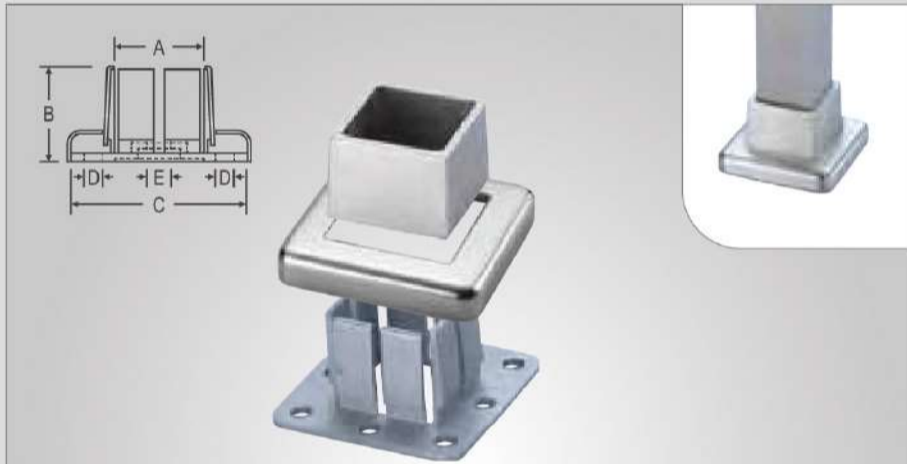
Code	Suit Tube	Wall	A	B	H	I	Wgt
MST-315AP	2" square	1.5mm	66	50.8	50	6.0	375g



### Square Base Plate With Cover (Weld) AISI 316 (Mirror)

- 4-hole base and cover set
- Mirror finished modular handrail components
- This item must be welded

Code	Suit Tube	Wall	A	B	C	D	E	F	Wgt
MST-2001A	2" square	1.5mm	50.8	84	14	1.0	3.0	6.0	148g



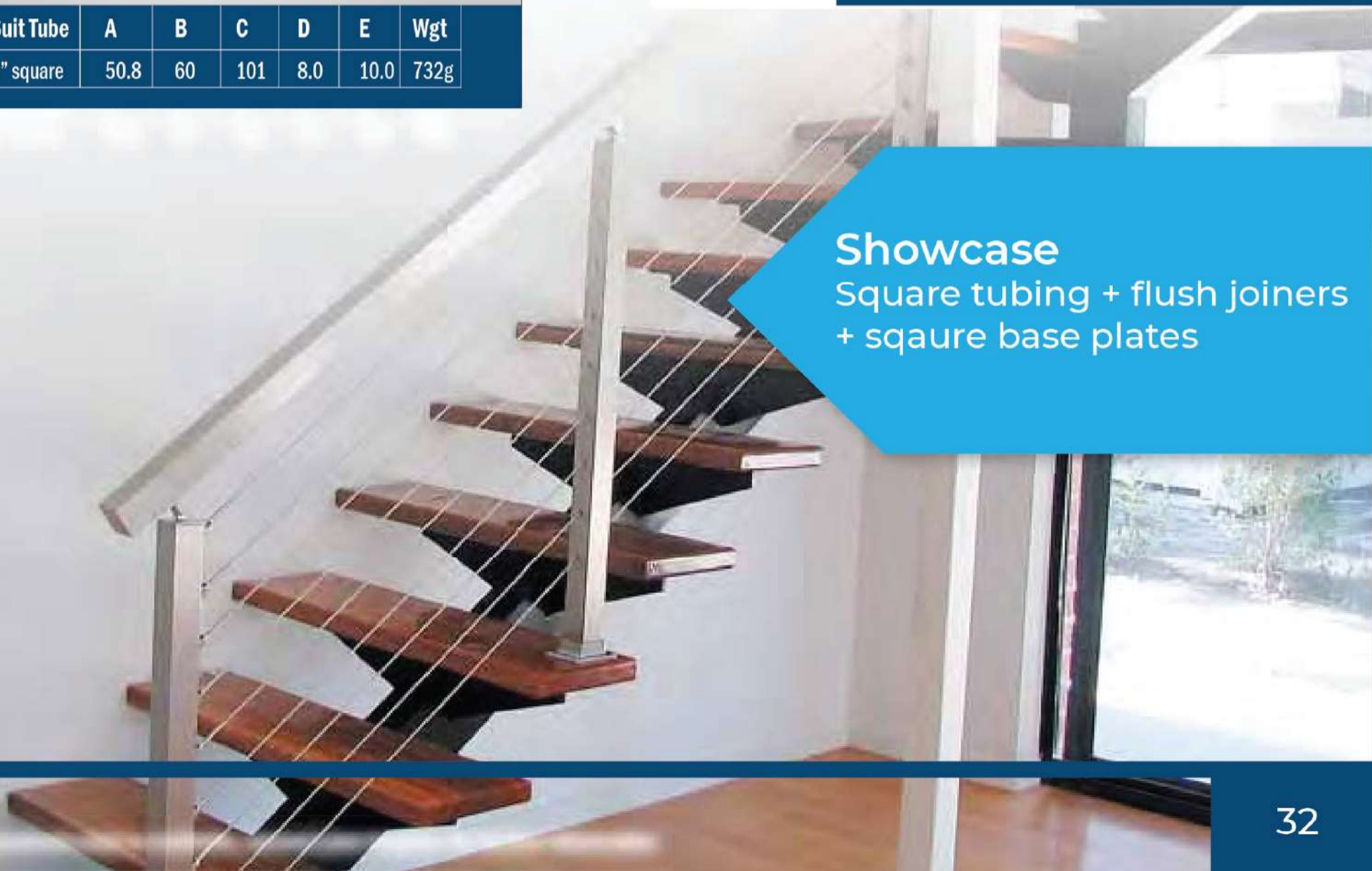
### Square Adjustable Heavy Duty Base Plate With Cover AISI 316 (Mirror)

- Height adjustable concealed heavy duty base plate & cover set
- Contains self-holding fins that grip onto the outside of the tube
- 8 outside holes and 1 centre hole on base for optimum support

Code	Suit Tube	A	B	C	D	E	Wgt
MST-2099	2" square	50.8	60	101	8.0	10.0	732g



**Showcase**  
Square tubing + flush joiners  
+ square base plates







## Side-Hold Glass Clamps

Limited only by your imagination, our range of glass clamp assemblies offer the perfect solution for functional and aesthetic handrail setups. With an attractive surface finish and a simple assembly method they are the perfect compliment to a stainless steel handrail and glass panel combination.

**These versatile high quality glass clamps can be used for:**

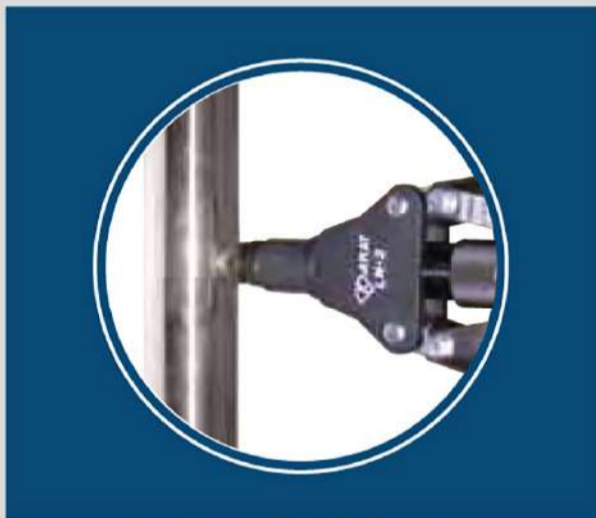
- Balustrades
- Semi-frameless and framed pool fencing
- Feature walls and kitchen splashbacks
- Shower doors/framework

### Associated Features:

- Easy to install with no glass drilling required
- Taiwanese manufactured to J&G optimum standards
- Minimal specialised tools required
- No previous experience required
- Professional results



**STEP 1** Drill hole to suit outside diameter of blind rivet nut



**STEP 2** Insert blind rivet nut to post with hand tool



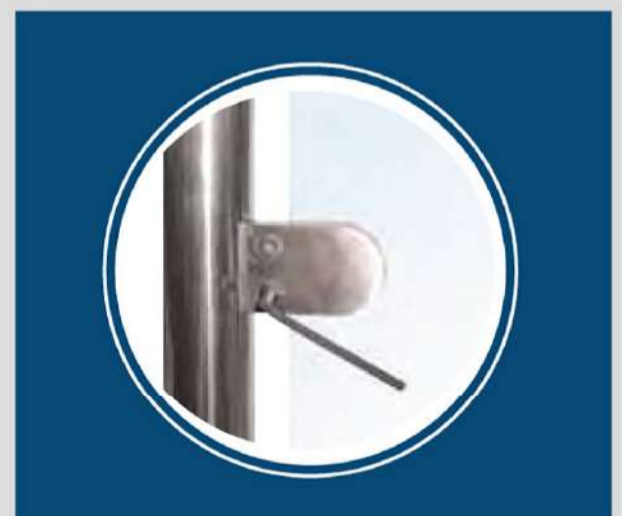
**STEP 3** Installed blind rivet nut ready for use



**Step 4** Screw button head cap screw into blind rivet nut through glass clamp to fix half of glass clamp to post



**Step 5** Install appropriate rubber gaskets to both halves of glass clamp



**Step 6** Fit glass into place, screw second half of glass clamp to hold glass



### Hot Tip

Insertion of blind rivet nuts is easy with our blind rivet nut hand tools





**GC-300**  
**GC-301**

### Glass Clamp Large 'D' Type AISI 316 (Satin)

- Gaskets sold separately, order to suit glass thickness
- Fix to posts with blind rivet nuts and cap screws
- Satin surface finish clamps to suit 8.0, 10.0 & 12.0mm glass
- Clamps can support approx. 60-80kgs per 2 clamps vertically positioned

Code	Suit Glass	Suit Post	H	L	W	T	D	Wgt
GC-300	6.0, 8.0mm	Square/Flat	40	50	23	16	9.0	157g
GC-301	6.0, 8.0mm	2" Round	40	50*	23	16	9.0	165g

\* Note 'L' measurement for GC-321 is from centre of radius  
Sold Each



**MGC-300**  
**MGC-301**

### Glass Clamp Large 'D' Type AISI 316 (Mirror)

- Gaskets sold separately, order to suit glass thickness
- Fix to posts with blind rivet nuts and cap screws
- Mirror surface finish clamps to suit 8.0, 10.0 & 12.0mm glass
- Clamps can support approx. 60-80kgs per 2 clamps vertically positioned

Code	Suit Glass	Suit Post	H	L	W	T	D	Wgt
MGC-300	6.0, 8.0mm	Square/Flat	40	50	23	16	9.0	165g
MGC-301	6.0, 8.0mm	2" Round	40	50	23	16	9.0	175g

\* Note 'L' measurement for MGC-321 is from centre of radius  
Sold Each



**NOTE: GASKETS SOLD SEPERATELY**

### Rubber Gaskets For Small Glass Clamps

Code	Suit Clamp	Suit Glass	Sold
GG-300-06	GC/MGC-300,301	6.0mm	Pair
GG-300-08	GC/MGC-300,301	8.0mm	Pair



**NOTE: GASKETS SOLD SEPERATELY**

### Glass Clamp Nylon Centre Pin (Optional)

Code	Suit Clamp	D	L	Sold
GPN-310	GC/MGC-310,311	6.0	20	Each



**NOTE: GASKETS SOLD SEPERATELY**

### Rubber Gaskets For Small Glass Clamps

Code	Suit Clamp	Suit Glass	Sold
GG-310-06	GC/MGC-310,311	6.0mm	Pair
GG-310-08	GC/MGC-310,311	8.0mm	Pair
GG-310-10	GC/MGC-310,311	10.0mm	Pair




**GC-310**  
**GC-311**

### Glass Clamp Medium 'D' Type AISI 316 (Satin)

- Gaskets sold separately, order to suit glass thickness
- Fix to posts with blind rivet nuts and cap screws
- Satin surface finish clamps to suit 6.0, 8.0 & 10.0mm glass
- Clamps can support approx. 60-80kgs per 2 clamps vertically positioned

Code	Suit Glass	Suit Post	H	L	W	T	D	Wgt
GC-310	6.0, 8.0, 10.0mm	Square/Flat	45	63	26	16	9.0	270g
GC-311	6.0, 8.0, 10.0mm	2" Round	45	63	26	16	9.0	275g

\* Note 'L' measurement for GC-311 is from centre of radius  
Sold Each



**MGC-310**  
**MGC-311**

### Square - Round Post Reducer '90° Corner' AISI 316 (Mirror)

- Gaskets sold separately, order to suit glass thickness
- Fix to posts with blind rivet nuts and cap screws
- Mirror surface finish clamps to suit 6.0, 8.0 & 10.0mm glass
- Clamps can support approx. 60-80kgs per 2 clamps vertically positioned

Code	Suit Glass	Suit Post	H	L	W	T	D	Wgt
MGC-310	6.0, 8.0, 10.0mm	Square/Flat	45	63	26	16	9.0	270g
MGC-311	6.0, 8.0, 10.0mm	2" Round	45	63	26	16	9.0	285g

\* Note 'L' measurement for MGC-311 is from centre of radius  
Sold Each





### Glass Clamp Large 'D' Type AISI 316 (Satin)

- Gaskets sold separately, order to suit glass thickness
- Fix to posts with blind rivet nuts and cap screws
- Satin surface finish clamps to suit 8.0, 10.0 & 12.0mm glass
- Clamps can support approx. 60-80kgs per 2 clamps vertically positioned

Code	Suit Glass	Suit Post	H	L	W	T	D	Wgt
GC-320	8.0, 10.0, 12.0mm	Square/Flat	55	60	32	16	9.0	370g
GC-321	8.0, 10.0, 12.0mm	2" Round	55	60	32	16	9.0	370g

\* Note 'L' measurement for GC-321 is from centre of radius Sold Each



### Glass Clamp Small 'D' Type AISI 316 (Mirror)

- Gaskets sold separately, order to suit glass thickness
- Fix to posts with blind rivet nuts and cap screws
- Mirror surface finish clamps to suit 8.0, 10.0 & 12.0mm glass
- Clamps can support approx. 60-80kgs per 2 clamps vertically positioned

Code	Suit Glass	Suit Post	H	L	W	T	D	Wgt
MGC-320	8.0, 10.0, 12.0mm	Square/Flat	55	60	32	16	9.0	385g
MGC-321	8.0, 10.0, 12.0mm	2" Round	55	60	32	16	9.0	390g

\* Note 'L' measurement for MGC-321 is from centre of radius Sold Each



### Rubber Gaskets For Large Glass Clamps

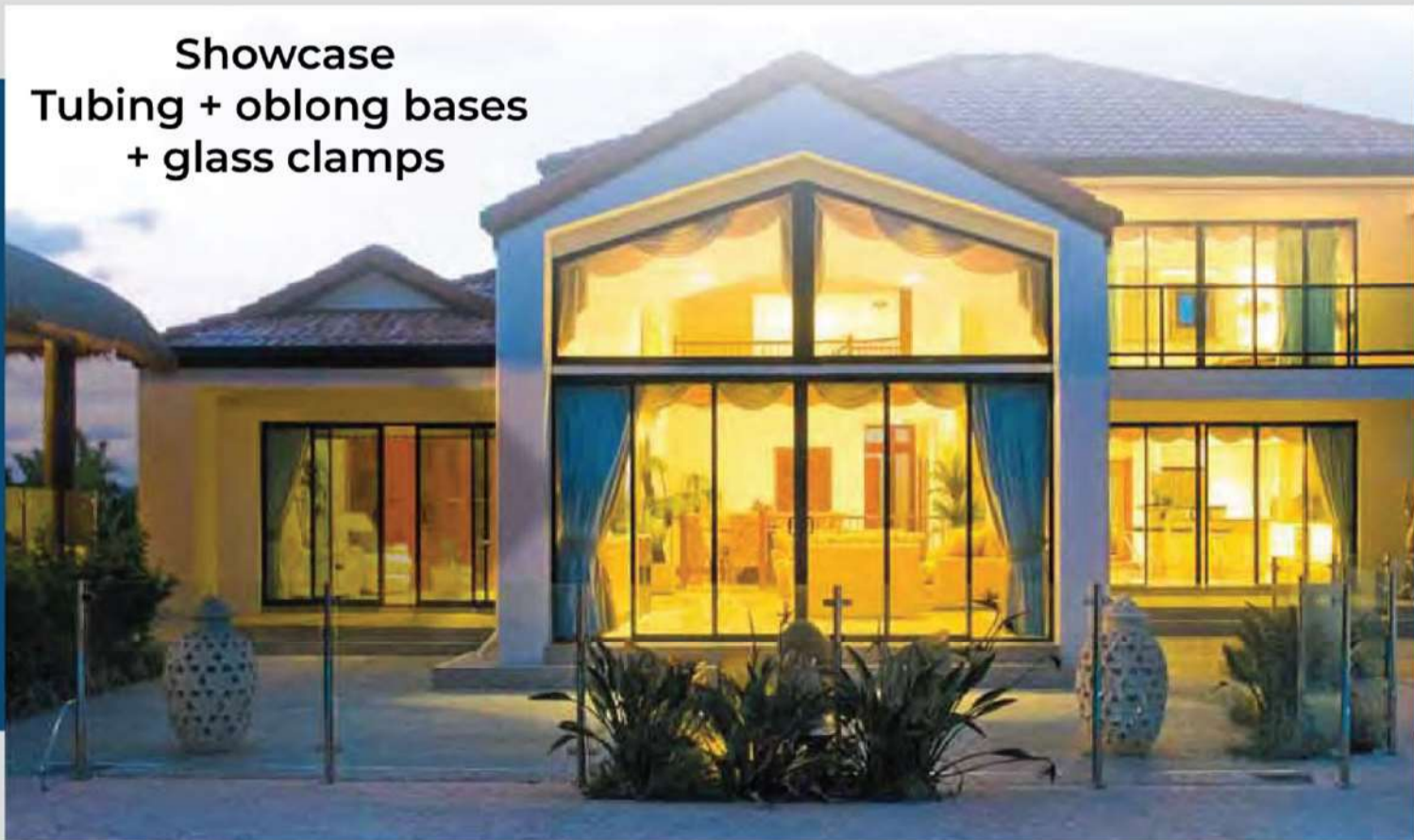
Code	Suit Clamp	Suit Glass	Sold
GG-320-08	GC/MGC-320,321	8.0mm	Pair
GG-320-10	GC/MGC-320,321	10.0mm	Pair
GG-320-12	GC/MGC-320,321	12.0mm	Pair



### Glass Clamp Nylon Centre Pin (Optional)

- Optional nylon centre pin for heavy glass panels
- Hole drilling in glass required for pins

Code	Suit Clamp	D	L	Sold
GPN-320	GC/MGC-320,321	6.0	26	Each







### Glass Clamp Medium 'D' Type L/H Support AISI 316 (Satin)

- Gaskets sold separately, order to suit glass thickness
- Fix to posts with blind rivet nuts and cap screws
- L/Hand corner glass hold for supporting glass
- Satin surface finish clamps to suit 6.0, 8.0 & 10.0mm glass
- Unique design to stop slippage of excessively heavy panels of glass

Code	Suit Glass	Hold	Suit Post	H	L	W	T	D	Wgt
GC-310-L	6.0, 8.0, 10.0mm	L/H	Square/Flat	45	63	26	16	9.0	271g
GC-311-L	6.0, 8.0, 10.0mm	L/H	2" Round	45	63	26	16	9.0	295g

\* Note 'L' measurement for GC-311-L is from centre of radius Sold Each



### Glass Clamp Medium 'D' Type L/H Support AISI 316 (Mirror)

- Gaskets sold separately, order to suit glass thickness
- Fix to posts with blind rivet nuts and cap screws
- L/Hand corner glass hold for supporting glass
- Mirror surface finish clamps to suit 6.0, 8.0 & 10.0mm glass
- Unique design to stop slippage of excessively heavy panels of glass

Code	Suit Glass	Hold	Suit Post	H	L	W	T	D	Wgt
MGC-310-L	6.0, 8.0, 10.0mm	L/H	Square/Flat	45	63	26	16	9.0	279g
MGC-311-L	6.0, 8.0, 10.0mm	L/H	2" Round	45	63	26	16	9.0	300g

\*\*Note 'L' measurement for MGC-311-L is from centre of radius Sold Each



### Glass Clamp Medium 'D' Type R/H Support AISI 316 (Satin)

- Gaskets sold separately, order to suit glass thickness
- Fix to posts with blind rivet nuts and cap screws
- R/Hand corner glass hold for supporting glass
- Satin surface finish clamps to suit 6.0, 8.0 & 10.0mm glass
- Unique design to stop slippage of excessively heavy panels of glass

Code	Suit Glass	Hold	Suit Post	H	L	W	T	D	Wgt
GC-310-R	6.0, 8.0, 10.0mm	R/H	Square/Flat	45	63	26	16	9.0	271g
GC-311-R	6.0, 8.0, 10.0mm	R/H	2" Round	45	63	26	16	9.0	295g

\* Note 'L' measurement for GC-311-R is from centre of radius Sold Each



### Glass Clamp Medium 'D' Type R/H Support AISI 316 (Mirror)

- Gaskets sold separately, order to suit glass thickness
- Fix to posts with blind rivet nuts and cap screws
- R/Hand corner glass hold for supporting glass
- Mirror surface finish clamps to suit 6.0, 8.0 & 10.0mm glass
- Unique design to stop slippage of excessively heavy panels of glass

Code	Suit Glass	Hold	Suit Post	H	L	W	T	D	Wgt
MGC-310-R	6.0, 8.0, 10.0mm	R/H	Square/Flat	45	63	26	16	9.0	279g
MGC-311-R	6.0, 8.0, 10.0mm	R/H	2" Round	45	63	26	16	9.0	300g

\*\*Note 'L' measurement for MGC-311-R is from centre of radius Sold Each



### Rubber Gaskets For Medium Glass Clamps

Code	Suit Clamp	Suit Glass	Sold
GG-310-06	GC/MGC-310,311	6.0mm	Pair
GG-310-08	GC/MGC-310,311	8.0mm	Pair
GG-310-10	GC/MGC-310,311	10.0mm	Pair

### Hot Tip

For large panes of glass use the corner 'shelf' system to eliminate glass slippage








**GC-210**  
**GC-211**

### Glass Clamp Small Square Type AISI 316 (Satin)

- Gaskets sold separately, order to suit glass thickness
- Fix to posts with blind rivet nuts and cap screws
- Satin surface finish clamps to suit 6.0 & 8.0mm glass
- Clamps can support approx. 60-80kgs per 2 clamps vertically positioned

Code	Suit Glass	Suit Post	H	L	W	T	D	Wgt
GC-210	6.0, 8.0mm	Square/Flat	45	45	28	16	9.0	203g
GC-211	6.0, 8.0mm	2" Round	45	45	28	16	9.0	222g

\* Note 'L' measurement for GC-211 is from centre of radius Sold Each




**MGC-210**  
**MGC-211**

### Glass Clamp Small Square Type AISI 316 (Mirror)

- Gaskets sold separately, order to suit glass thickness
- Fix to posts with blind rivet nuts and cap screws
- Mirror surface finish clamps to suit 6.0 & 8.0mm glass
- Clamps can support approx. 60-80kgs per 2 clamps vertically positioned

Code	Suit Glass	Suit Post	H	L	W	T	D	Wgt
MGC-210	6.0, 8.0mm	Square/Flat	45	45	28	16	9.0	209g
MGC-211	6.0, 8.0mm	2" Round	45	45	28	16	9.0	230g

\* Note 'L' measurement for M-211 is from centre of radius Sold Each



**NOTE: GASKETS SOLD SEPERATELY**

### Rubber Gaskets For Small Glass Clamps

Code	Suit Clamp	Suit Glass	Sold
GG-210-06	GC/MGC-210,211	6.0mm	Pair
GG-210-08	GC/MGC-210,211	8.0mm	Pair




### Glass Clamp Nylon Centre Pin (Optional)

- Optional nylon centre pin for heavy glass panels
- Hole drilling in glass required for pins

Code	Suit Clamp	D	L	Sold
GPN-200	GC/MGC-200,201	6.0	20	Each



**NOTE: GASKETS SOLD SEPERATELY**

### Rubber Gaskets For Large Glass Clamps

Code	Suit Clamp	Suit Glass	Sold
GG-200-08	GC/MGC-200,201	8.0mm	Pair
GG-200-10	GC/MGC-200,201	10.0mm	Pair
GG-200-12	GC/MGC-200,201	12.0mm	Pair




**GC-200**  
**GC-201**

### Glass Clamp Large Square Type AISI 316 (Satin)

- Gaskets sold separately, order to suit glass thickness
- Fix to posts with blind rivet nuts and cap screws
- Satin surface finish clamps to suit 8.0, 10.0 & 12.0mm
- Clamps can support approx. 60-80kgs per 2 clamps vertically positioned

Code	Suit Glass	Suit Post	H	L	W	T	D	Wgt
GC-200	8.0, 10.0, 12.0mm	Square/Flat	55	55	32	16	9.0	398g
GC-201	8.0, 10.0, 12.0mm	2" Round	55	55	32	16	9.0	417g

\* Note 'L' measurement for GC-201 is from centre of radius Sold Each




**MGC-200**  
**MGC-201**

### Glass Clamp Large Square Type AISI 316 (Mirror)

- Gaskets sold separately, order to suit glass thickness
- Fix to posts with blind rivet nuts and cap screws
- Mirror surface finish clamps to suit 8.0, 10.0 & 12.0mm
- Clamps can support approx. 60-80kgs per 2 clamps vertically positioned

Code	Suit Glass	Suit Post	H	L	W	T	D	Wgt
MGC-200	8.0, 10.0, 12.0mm	Square/Flat	55	55	32	16	9.0	406g
MGC-201	8.0, 10.0, 12.0mm	2" Round	55	55	32	16	9.0	431g

\* Note 'L' measurement for MGC-201 is from centre of radius Sold Each





Quality

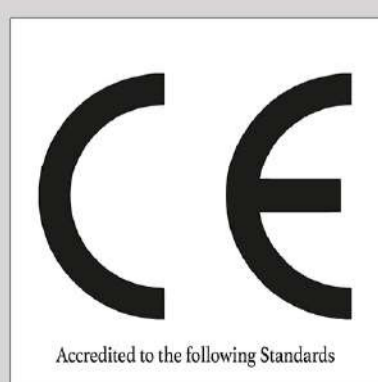
## QUALITY POLICY

NSF is fully committed to a quality policy which ensures delivery of its products and services “defect free on time”. NSF provides quality management, co-ordination, production and processing, manufacture, and installation services throughout KSA and sometimes outside KSA. Since the establishment, NSF is primarily engaged in providing Architectural Engineering solutions in the market and aims to achieve a high standard of production and trading services.

• **NSF possess the policy to:**

- Manufacture and supply products which fully confirm to the customer’s requirements, relating to quality, reliability and delivery.
- Use the company’s considerable experience and knowledge in the production of standard products to assist customers in the cost-effective design and development of both existing and new products.
- Ensure that suppliers of raw materials, goods and services confirm to all requirements and are of a consistently high quality, to enable the company to achieve its commitments to all customers.
- Recognize that the responsibility for quality lies with all employees of the company and hence to stimulate and encourage interest and pride in their work.
- Hold frequent Quality Management System review meetings to enable continual review of the suitability of the Quality policy and all aspects of the Quality Management System.

These requirements of Quality Policies are compared to the requirements of ISO 9001:2015- Quality Policy. NSF strives to eliminate





**NMG NIPRAS**  
METAL GROUP

مجموعة نبراس المعادن  
NIPRAS METAL GROUP



مصنع نبراس المعادن  
NIPRAS STEEL FACTORY



NMC



شركة نبراس المعادن للتجارة  
NIPRAS METAL TRADING Co.

✉ [info@nipras.sa](mailto:info@nipras.sa) 🌐 [www.nipras.sa](http://www.nipras.sa)